

2024 Report of summer steelhead snorkel surveys on the North Fork Skykomish and the North and South Fork Tolt rivers



Photograph by Jamie Glasgow, WFC

The Washington Department of Fish and Wildlife

The Wild Fish Conservancy

Annual Report

Introduction

In 2019 the Washington Department of Fish and Wildlife (WDFW) and Wild Fish Conservancy (WFC) initiated a cooperative effort to design and implement a monitoring program to enumerate summer-run steelhead in the North Fork Skykomish River and the North and South Fork Tolt rivers via snorkel surveys. The primary objective of the snorkel surveys is to collect information on adult summer steelhead abundance, distribution, and mark status. In 2024 two snorkel surveys, one in late August and the second in early October, were conducted within the mainstem anadromous zone of the North Fork Skykomish River. One snorkel survey of the mainstem anadromous zone of the South Fork Tolt River (excluding the ~ 0.8 river mile (RM) canyon reach and excluding the lower 1.3 miles- reach SF-4b) and of an index reach of the North Fork Tolt River was conducted in late September.

North Fork Skykomish

Methods

Nine North Fork Skykomish reaches were established in 2019, encompassing the mainstem anadromous zone (roughly 19 RM). Reaches were roughly 2 RM in length, with tops and bottoms at easily identifiable landmarks, such as bridges, tributary mouths, or established trails, and for ease of access from roads (Table 1, Appendix 1).

Table 1. Reach descriptions of North Fork Skykomish snorkel reaches.

Reach Number	Description	RM upper	RM lower	Reach Length (RM)
1	Deer Falls downstream to North Fork Bridge	19.0	16.2	2.8
2	North Fork Bridge downstream to San Juan Campground	16.1	13.9	2.2
3	San Juan Campground downstream to Swim Hole ^[1]	13.8	12.4	1.4
4	Swim Hole downstream to Index-Galena Road Bridge	12.3	11.0	1.3
5	Index-Galena Road Bridge downstream to Cable Crossing	10.9	8.4	2.5
6	Cable Crossing downstream to Trout Creek	8.3	6.7	1.6
7	Trout Creek downstream to Forest Service Gate 310 trail	6.6	4.2	2.4
8	Forest Service Gate 310 trail downstream to Index Bridge	4.1	1.5	2.6
9	Index Bridge downstream to Mouth of NF Skykomish River	1.4	0.0	1.4

^[1] Includes partial barrier falls, Bear Creek Falls (RM 13.1)

In 2024, two snorkel surveys were conducted on the North Fork Skykomish, one on August 28th and 29th, and the second on October 2nd. WDFW was still under a snorkel moratorium but provided safety gear and ground support for the two surveys. In August WFC provided enough participants to survey reaches 1-3 on the first day, and reaches 4-6 the following day. Reaches 1 and 2 had teams of three snorkelers, while the rest of the reaches were surveyed by teams of two snorkelers. This resulted in the upper 6.5 miles (including above and below Bear Creek Falls) being surveyed on the first day of the survey, and 5.7 miles being surveyed on the second day. In October, WFC snorkeled reaches 1-3 with three snorkel teams. A three-person team surveyed reach 1 and two-person teams snorkeled reaches 2 and 3.

The primary goal was to collect data on adult summer steelhead abundance, distribution, and mark status (adipose fin presence/absence); counts of other salmonids and fishes were secondary. Fish were tallied by species and size class/life-history, and by mark status for adult summer steelhead (Table 2). Presence or absence was noted for *O. mykiss* young-of-year (YOY) and parr (pre-smolt). *O. mykiss* resident adult trout and anadromous adult summer steelhead were tallied (Table 3).

Table 2. Species and life histories enumerated during North Fork Skykomish snorkel surveys in 2024.

Species	Life history	Data collection
<i>O. mykiss</i> (steelhead)	Anadromous	Count by mark status- see Table 3
<i>O. mykiss</i> (rainbow)	Resident	Count- see Table 3
<i>O. mykiss</i> (rainbow)	Fry/parr	Presence/absence- see Table 3
Bull trout	Adult	Count
Cutthroat trout	Adult	Count; coastal vs. westslope
Chinook salmon	Anadromous adult	Count
Coho salmon	Anadromous adult	Count
Pink salmon	Anadromous adult	Count
Sockeye salmon	Anadromous adult	Count
Chum salmon	Anadromous adult	Count
Mountain whitefish	Adult	Count
Largescale sucker	Adult	Count
Chinook salmon	Juvenile	Presence/absence
Coho salmon	Juvenile	Presence/absence
Bull trout	Juvenile	Presence/absence
Brown trout	Adult	Count

Table 3. Size class for *O. mykiss* enumeration during North Fork Skykomish snorkel surveys in 2024.

<i>O. mykiss</i> life history	Size class
YOY	0 – 65 mm (0 – 2.6 inches)
Parr (pre-smolt)	66- 250 mm (2.6 inches – 9.8 inches)
Resident adult trout	251 – 449 mm (9.8 inches – 17.7 inches)
Anadromous adult steelhead	≥ 450 mm (≥ 18 inches)

Teams of two to three surveyors snorkeled downstream beginning at the top of their assigned reach. Efforts were made to survey all habitats likely to hold adult summer steelhead, except for habitats that were too dangerous to safely snorkel. Surveyors floated through 1/10 RM sub-reaches that were demarcated on handheld GPS units, discussed their observations, and reached consensus on counts.

Counts were recorded within field notebooks or on dive slates. Post survey all field data were entered in the standardized datasheet (Appendix 2) and then entered in an electronic database.

Results and discussion

One hundred and twenty-seven adult summer steelhead were observed during the August survey, including 100 unmarked, 20 marked, and 7 unknown origin (Table 4). In October, during the survey of reaches 1-3, 124 adult summer steelhead were observed, of which 106 were unmarked, 17 were marked, and one were of unknown origin (Table 5). The majority of adult summer steelhead were seen above Bear Creek Falls in August, in presumed summer steelhead spawning habitat (Table 6, Table 7). Reaches 1 – 6 were surveyed in August, leaving the lower 6.7 RM of anadromous waters unsurveyed. All but five summer steelhead were seen above Bear Creek Falls in the reaches surveyed in October (reaches 1-3, including ~0.5 RM below Bear Creek Falls). *O. mykiss* of other life histories were observed throughout the river in both surveys.

In August, adult bull trout were observed throughout the river, and similar to adult summer steelhead distribution, were also found in greater numbers above Bear Creek Falls (Table 4, Table 5). Bull trout were further concentrated in the uppermost two reaches, within documented bull trout spawning habitat. Adult coho salmon were observed throughout the surveyed reaches in August. The number of adult coho observed greatly increased between the August and October surveys despite the truncated October survey (Table 4, Table 5). During both surveys, adult Chinook salmon were observed throughout the surveyed area. Small numbers of adult sockeye were observed in both surveys, with the majority above Bear Creek Falls (Table 4, Table 5). No chum were observed in either survey.

Table 4. North Fork Skykomish snorkel survey fish counts, August 28 and 29, 2024. UM= unmarked; M = marked; UNK = unknown mark status; P = presence.

	Steelhead counts			O. mykiss counts			Other species adult counts							
Reach	UM	M	UNK	YOY	1+	Adult	Chinook	Coho	Pink	Sockeye	Chum	Bull Trout	Cutthroat	Whitefish
1	27	2	4	P	P	23	2	16	0	1	0	60	0	0
2	8	3	1	P	P	18	0	1	0	0	0	16	0	0
3	49	10	1	P	P	30	5	157	0	8	0	5	1 _[1]	9
4	7	0	1	P	P	73	1	19	0	0	0	1	0	53
5	3	3	0	P	P	91	19	206	0	5	0	9	0	194
6	6	2	0	P	P	49	8	31	0	0	0	5	0	51
7														
8														
9														
TOTALS	100	20	7			284	35	430	0	14	0	96	1	307

^[1] Identified as Westslope Cutthroat

Table 5. North Fork Skykomish snorkel survey fish counts, October 2, 2024, UM= unmarked; M = marked; UNK = unknown mark status; P = presence; A = absence.

Reach	Steelhead counts			O. mykiss counts			Other species adult counts							
	UM	M	UNK	YOY	1+	Adult	Chinook	Coho	Pink	Sockeye	Chum	Bull Trout	Cutthroat	Whitefish
1	38	3	1	P	P	29	1	86	0	2	0	67	0	0
2	45	4	0	P	P	38	3	182	0	3	0	31	0	0
3	23	10	0	P	P	88	5	1,790	0	1	0	0	0	51
4														
5														
6														
7														
8														
9														
TOTALS	106	17	1			155	9	2,058	0	6	0	98	0	51

Table 6. Summer steelhead distribution by mark type above and below Bear Creek Falls (BCF) (RM 13.1), August 28 and 29, 2024. UM= unmarked; M = marked; UNK = unknown mark status.

Steelhead counts	Above BCF	Below BCF ^[1]	% Above BCF	% Below BCF
UM	80	20	80%	20%
M	14	6	70%	30%
UNK	5	2	71%	29%
Total	99	28	78%	22%

^[1] Reaches 1-6 surveyed, reach 6 ends at river mile 6.7, 6.4 miles below BCF

Table 7. Summer steelhead distribution by mark type above and below Bear Creek Falls (BCF) (RM 13.1), October 2, 2024. UM= unmarked; M = marked; UNK = unknown mark status.

Steelhead counts	Above BCF	Below BCF ^[1]	% Above BCF	% Below BCF
UM	104	2	98%	2%
M	14	3	82%	18%
UNK	1	0	100%	0%
Total	119	5	96%	4%

^[1] Reaches 1-3 surveyed, reach 3 ends .5 mile below BCF

Table 8. North Fork Skykomish snorkel August/September survey fish counts, 2019-2024.

	Steelhead counts				
Year	Unmarked	Marked	Unknown	Total	Percent Marked
2019	28	4	2	34	12.5%
2020	18	1	2	21	5.3%
2021	18	11	1	30	37.9%
2022	42	6	8	56	12.5%
2023	134	28	51	213	17.3%
2024 ^[1]	100	20	7	127	16.7%

^[1] Reaches 1-6 surveyed.

Table 9. North Fork Skykomish snorkel October/November survey fish counts, 2019-2024.

	Steelhead counts				
Year	Unmarked	Marked	Unknown	Total	Percent Marked
2019	71	8	3	82	10.1%
2020	19	7	3	29	26.9%
2021	34	4	6	44	10.5%
2022 ^[1]	48	6	0	54	11.1%
2023 ^[2]	75	32	5	112	29.9%
2024 ^[2]	106	17	1	124	13.8%

^[1] Reaches 1-4 surveyed in mid-November

^[2] Reaches 1-3 surveyed in early October

2024 survey modifications

No survey methodology changes took place in 2024. The August and October surveys were shortened to reaches 1-6 and 1-3, respectively, due to WDFW's suspension of snorkel activities. WDFW provided ground support to Wild Fish Conservancy staff to ensure a survey of all prior established reaches above Bear Creek Falls occurred.

Survey trends and relationships to other regional summer steelhead data sources

2024 October summer steelhead counts and mark-rates of approximately 14 percent were less than the previous year (Table 9). Four of six years showed a lower mark rate during the later October/November snorkel survey compared to the August survey (Table 8 and Table 9). The last two years, both August and October snorkels have had the highest count of summer steelhead of the 6 years of surveys and despite abbreviated surveys (Table 8 and Table 9). From 2019 – 2024, fewer summer steelhead were observed in the North Fork Skykomish in October than were captured at Sunset Falls on the South Fork Skykomish (Table 10). Sunset Falls is located at RM 51.8 on the South Fork Skykomish River, 2.2 RM upstream from the confluence of North and South Forks. The mark-rate at Sunset Falls in 2024 (28.7%)

was higher than the mark-rate in the North Fork (13.8%) (Table 10). An analysis looking at mark-rate comparisons between years is available from Wild Fish Conservancy upon request.

Table 10. North Fork Skykomish October/November steelhead counts, and Sunset Falls Trap total steelhead counts, 2019-2024.

	North Fork Skykomish Snorkel Counts					Sunset Falls Trap Counts ^[1]			
Year	Unmarked	Ad-clipped	Unknown	Total	Percent Marked	Unmarked	Ad-clipped	Total	Percent Marked
2019	71	8	3	82	10.1%	249	25	274	9.1%
2020	19	7	3	29	26.9%	119	14	133	10.5%
2021	34	4	6	44	10.5%	60	20	80	25.0%
2022	48	6	0	54	11.1%	188	20	208	9.6%
2023	75	32	5	112	29.9%	187	69	247	26.9%
2024	106	17	1	124	13.8%	259	104	363	28.7%

^[1] [Sunset Falls Trap counts obtained from WDFW's public hatchery escapement report:](https://wdfw.wa.gov/fishing/management/hatcheries/escapement)

<https://wdfw.wa.gov/fishing/management/hatcheries/escapement>

Considerations for future surveys

- Attempt to capture and externally mark adult summer steelhead to implement a mark-re-sight study and enable calculation of a robust adult summer steelhead escapement estimate.

Figure 1. August snorkel team on the North Fork Skykomish River.



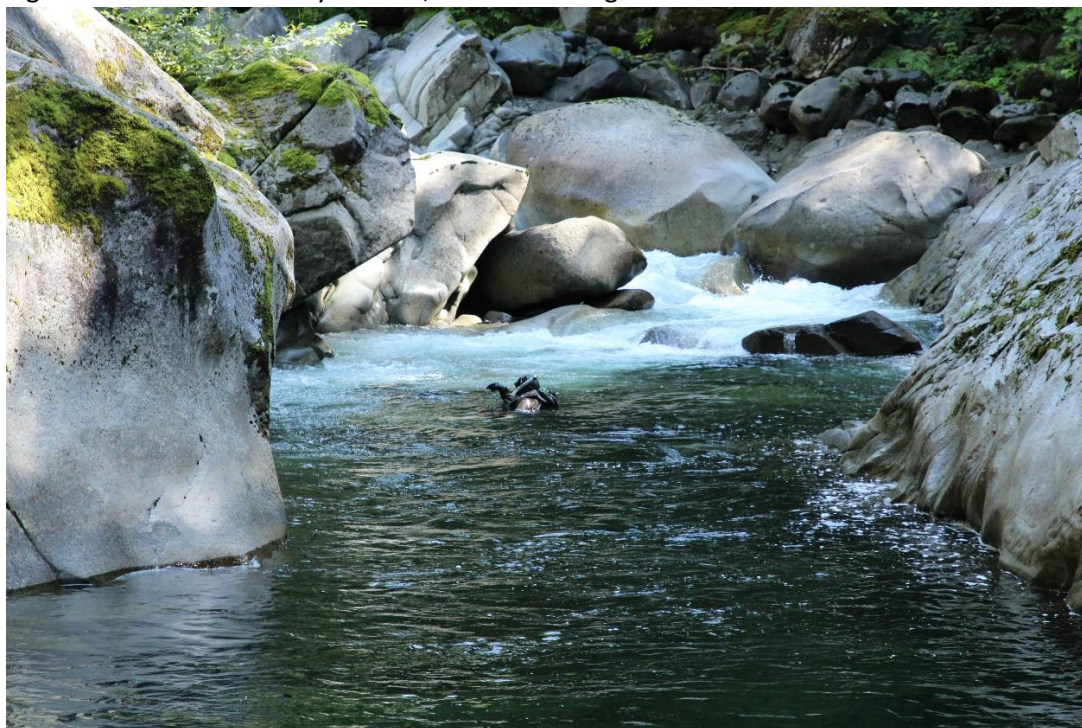
Photograph by Pete Verhey, WDFW

Figure 2. October snorkel team on the North Fork Skykomish River.



Photograph by Pete Verhey, WDFW

Figure 3. The end of NF Sky reach 3, “the swimming hole”



Photograph by Pete Verhey, WDFW

Figure 4. The end of NF Sky reach 3, “the swimming hole”



Photograph by Pete Verhey, WDFW

South Fork and North Fork Tolt

Methods

Snorkel surveys to enumerate adult summer steelhead have been conducted at least annually (excluding 2004-2008) since 1989 in portions of the anadromous mainstem reaches of the South Fork Tolt and the North Fork Tolt by WFC and partners, including Seattle City Light, the Snoqualmie Tribe, and King County. 2024 snorkel surveys utilized GIS-generated river miles uploaded onto Garmin GPS units carried by the survey teams. While the start and end points for each reach remained the same as previously established, there were slight adjustments to the sub-reach locations due to GIS-based river mile placements to ensure consistency during future surveys. The survey on the South Fork Tolt extended from RM 7.8 to RM 0.0, covering the entire mainstem anadromous zone (WFC 2024), excluding the steep canyon reach (approx. RM 3.5 to 2.5) due to safety concerns. In 2024, reach SF-4b, the downstream-most reach in the SF Tolt, was not surveyed due to lack of snorkelers. Reaches were roughly 1- 2 RM in length, with tops and bottoms chosen at easily identifiable landmarks, such as bridges, tributary mouths, or established trails, and for ease of access from roads (Table 11, Appendix 5). An index reach on the North Fork Tolt (RM 3.2 – 1.1) was surveyed the same day as the South Fork. WDFW was unable to provide snorkelers for the 2024 Tolt surveys due to the Department’s snorkeling suspension, but WDFW provided safety gear and ground support.

Table 11. Reach descriptions of South Fork and North Fork Tolt snorkel reaches in 2024.

Reach Number	Description	RM upper	RM lower	Reach Length (RM)
SF-1	SF Falls to USGS Gauge 12148000	7.8	6.9	0.9
SF-2	USGS Gauge 12148000 to Lynch Cr.	6.9	5.1	1.8
SF-3	Lynch Cr. to top of canyon ^[1]	5.1	3.5	1.6
SF-4a	Bottom of canyon to flagged trail	2.5	1.4	1.1
SF-4b ^[2]	Flagged trail to Confluence	1.4	0.0	1.4
NF-1	USGS gauge pool to flagged trail	2.8	1.2	1.6

^[1] Index reach for South Fork Tolt, located just above partial barrier canyon at RM 3.5.

^[2] Reach SF-4b not surveyed in 2024

The primary goal was to collect data on adult summer steelhead abundance, distribution, and mark status; counts of other salmonids and fishes were secondary. Fish were tallied by species and size class/life-history, and by mark status for adult summer steelhead. *O. mykiss* were tallied according to established size classes- young of year (YOY), parr (pre-smolt), resident adult trout, and anadromous adult summer steelhead (Table 12). Tolt surveys also recorded *O. mykiss* “half-salts”, defined as intermediate in size between resident adult trout and anadromous steelhead (approximately 14 inches to 20 inches), and the appearance of “ocean phase” coloration and shape.

The snorkel survey was conducted on the North and South Fork Tolt on September 26, 2024; slightly earlier than in past years in an effort to avoid turbidity and reduced visibility observed during recent early October surveys. Teams of two or three surveyors snorkeled downstream beginning at the top of

their assigned reach. Efforts were made to survey all habitats likely to hold adult summer steelhead, except for habitats that were too dangerous to safely snorkel. Surveyors snorkeled through 1/10 RM sub-reaches identified by GPS, stopped and discussed their observations, reached consensus on counts, and recorded counts in field notebooks. Post survey all field data were entered in the standardized datasheet (Appendix 6).

Results and discussion

South Fork: Seventy-one adult summer steelhead were observed during the South Fork Tolt survey, including 60 unmarked, 3 marked, and 8 unknown origin; 9 “half-salts” of unknown mark status were observed (Table 12). Three steelhead were observed below the canyon and sixty-eight above the canyon (RM 3.5), in presumed summer steelhead habitat (Table 13). *O. mykiss* of other life histories were observed throughout the river. Six adult Chinook salmon were observed in the lowermost surveyed reach, four of those were ad-clipped (Table 12).

North Fork: Two steelhead were observed during the survey of the North Fork Tolt index reach; both were recorded as unmarked. Seven “half-salts” with unknown mark status and one ad clipped “half salt” were observed as well as other *O. mykiss* life histories. Thirteen mountain whitefish and two adult Chinook salmon were observed; these two Chinook were of unknown adipose clip status (Table 12).

Table 12. South and North Fork Tolt snorkel survey fish counts, September 26, 2024. UM= unmarked; M = marked; UNK = unknown mark status; P = presence; A = absence.

	Steelhead counts				O. mykiss counts			Other species adult counts							
Reach	UM	M	UNK	Half-salt	YOY	1+	Adult	Chinook	Coho	Pink	Sockeye	Chum	Bull Trout	Cutthroat	Whitefish
SF-1	7	0	1	2	P	P	146	0	0	0	0	0	0	0	0
SF-2	33	2	4	2	P	P	16	0	0	0	0	0	0	0	0
SF-3	20	0	1	1	P	P	45	0	0	0	0	0	0	0	0
SF-4a	0	1	2	4	P	P	31	6	0	0	0	0	0	2	33
SF-4b															
SF TOTALS	60	3	8	9	P	P	238	6	0	0	0	0	0	3	33
NF-1	2	0	0	8 ^[1]	P	P	49	2	0	0	0	0	0	0	13
NF TOTALS	2	0	0	8	P	P	49	2	0	0	0	0	0	0	13

^[1] One half-salt was marked (ad-clipped), indicating hatchery-origin

Table 13. South Fork Tolt summer steelhead distribution by mark type above and below partial barrier canyon (RM 2.5 to 3.5), September 26, 2024. UM= unmarked; M = marked; UNK = unknown mark status.

Steelhead counts	Above barrier ^[1]	Below barrier ^[2]	% Above barrier	% Below barrier
UM	60	0	100%	0%
M	2	1	66.7%	33.3%
UNK	6	2	75%	25%
Total	68	3	95.8%	4.2%

^[1] 5 “half-salts” of unknown mark status were also observed above the barrier.

^[2] 4 “half-salts” of unknown mark status were also observed below the barrier.

Survey trends and relationships to other regional summer steelhead data sources

Seventy-one steelhead were observed in the South Fork in 2024, compared to 31 in 2019, 27 in 2020, 14 in 2021, 35 in 2022 and 37 in 2023. 2024 observations of steelhead were the highest in six years, possibly as a result of the slightly earlier survey and associated improved visibility. In the last six years, 2023 and 2024 were the only years marked steelhead were observed (Table 14). South Fork Tolt summer steelhead snorkel counts were lower than redd-based escapement estimates in 2019-2024 (Table 15). Tolt summer steelhead escapement estimates are based on redd surveys conducted by WDFW in designated summer steelhead spawning habitat (above the canyon on the SF Tolt, from RM 3.3 to RM 7.8). Surveys are conducted every 7 – 10 days (when river conditions allow) during the summer steelhead spawning season, from approximately early February to the end of May, or until new redds are no longer observed (WDFW, unpublished data). WDFW also surveys the NF Tolt (RM 0.0 to RM 2.8, excluding the canyon), the lower SF Tolt (below the canyon) and the mainstem Tolt; redds observed in these sections are designated as winter steelhead redds and are included within the Snoqualmie winter steelhead escapement estimate.

Table 14. Tolt fall snorkel survey fish counts, 2019-2024. UM= unmarked; M = marked; UNK = unknown mark status.

	SF Tolt					NF Tolt				
	Steelhead counts					Steelhead counts				
Year	UM	M	UNK	Total	Percent Marked	UM	M	UNK	Total	Percent Marked
2019	21	0	10	31	0%	-	-	-	-	-
2020	19	0	8	27	0%	0	0	0	0	-
2021	10	0	4	14	0%	6	0	0	6	0%
2022	26	0	9	35	0%	1	0	1	2	0%
2023	15	3	19	37	16.7%	2	0	1	3	0%
2024	60	3	8	71	4.8%	2	0	0	2	0%

Table 15. South Fork Tolt September/October snorkel survey counts, and South Fork Tolt redd-based escapement estimate for summer steelhead above RM 3.2, 2019-2024.

	South Fork Tolt Total Snorkel Counts	South Fork Tolt Redd-Based Escapement Estimate ^[1]
2019	31	38
2020	27	40
2021	14	44
2022	35	98
2023	37	108
2024	71	NA

^[1] Steelhead observed during fall snorkel will spawn in the spring, therefore the current years escapement estimate will be reported in next year's report.

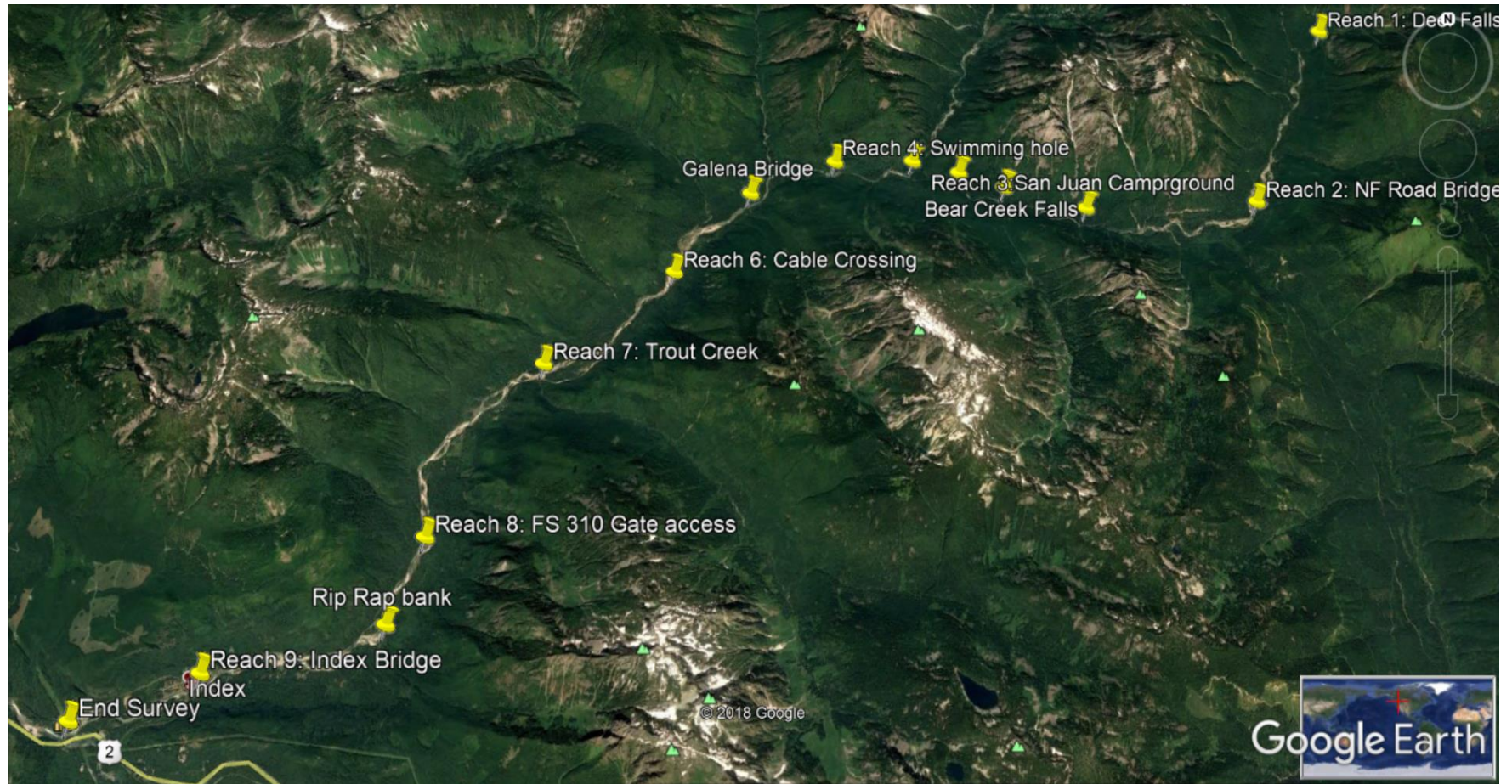
Considerations for future surveys

- Attempt to capture and externally mark adult summer steelhead in order to implement a mark-re-sight study and enable calculation of a robust adult summer steelhead escapement estimate.
- Remind surveyors to record observations of marked fish for all species of salmonids observed.
- Schedule surveys for late September, before SF Tolt turbidity increases and visibility declines in October.

References

Wild Fish Conservancy Northwest (WFC), 2024. Tolt Summer Steelhead Surveys. Final Report. October 31, 2024.

Appendix 1- North Fork Skykomish Survey Sections Map



Appendix 2- Data sheet, North Fork Skykomish

Date: ____/____/____ River: _____ Crew: _____

Reach no. & description: _____ Top RM: ____ Bottom RM: ____ Flow: _____ Stage: _____
Sky @ Goldbar NF Sky @ Index

Weather: ____ Visibility: _____ % Adult Sum. STHD Seen: _____ Notes: _____

River mile est. (tenths)	Steelhead counts			RBT Adult	O. mykiss presence/ab sence		Other species adult counts										Juvenile salmon presence/absence			Notes
	UM	M	UNK		1+	YOY	CHNK	COHO	PINK	SOCK	CHUM	BULL	CUTT	WHITE	SUCKR	CHNK	COHO	BULL		
1																				
2																				
3																				
4																				
5																				
6																				
7																				
8																				
9																				
10																				
11																				
12																				
13																				
14																				
15																				
16																				
17																				
18																				
19																				
20																				
21																				
22																				

TOTAL

--	--	--	--	--	--	--	--	--	--	--	--	--	--	--	--	--	--	--	--

Reach habitat: % gradient: _____ % pool: _____ % riffle: _____ % glide: _____ % cascade: _____

Appendix 3 - North Fork Skykomish Snorkel Observation Data, August 28 and 29, 2024

2024 Summer Steelhead Snorkel Surveys							Steelhead counts			o.mykiss			Other species adult counts										Juvenile salmon counts				Notes	
Date	River	Reach	Reach Description	Reach n	RM upper	RM lower	UM	M	UNK	YOY	1+	Adult	Chinook	Coho	Pink	Sockeye	Chum	Bull	Trout	Cutthroat	Whitefish	Sucker	Chinook	Coho	Bull			
8/28/2024	NF Skykomish	1	First barrier falls to NF Br.	1.00	18.8	18.7				P			1															
8/28/2024	NF Skykomish	1	First barrier falls to NF Br.	1.01	18.7	18.6				P																		
8/28/2024	NF Skykomish	1	First barrier falls to NF Br.	1.02	18.6	18.5				P																		
8/28/2024	NF Skykomish	1	First barrier falls to NF Br.	1.03	18.5	18.4	1	1	1																			
8/28/2024	NF Skykomish	1	First barrier falls to NF Br.	1.04	18.4	18.3	4		1											6							Steelhead at RB channel	
8/28/2024	NF Skykomish	1	First barrier falls to NF Br.	1.05	18.3	18.2				P	P																	
8/28/2024	NF Skykomish	1	First barrier falls to NF Br.	1.06	18.2	18.1	1						1	1						1								
8/28/2024	NF Skykomish	1	First barrier falls to NF Br.	1.07	18.1	18.0					P	3																
8/28/2024	NF Skykomish	1	First barrier falls to NF Br.	1.08	18.0	17.9				P	P									1								
8/28/2024	NF Skykomish	1	First barrier falls to NF Br.	1.09	17.9	17.8					P	3															Some walking	
8/28/2024	NF Skykomish	1	First barrier falls to NF Br.	1.10	17.8	17.7																					Some walking	
8/28/2024	NF Skykomish	1	First barrier falls to NF Br.	1.11	17.7	17.6			1		P																	
8/28/2024	NF Skykomish	1	First barrier falls to NF Br.	1.12	17.6	17.5						2								1								
8/28/2024	NF Skykomish	1	First barrier falls to NF Br.	1.13	17.5	17.4				P	P													1				
8/28/2024	NF Skykomish	1	First barrier falls to NF Br.	1.14	17.4	17.3				P	P	1																
8/28/2024	NF Skykomish	1	First barrier falls to NF Br.	1.15	17.3	17.2	1				P	1																
8/28/2024	NF Skykomish	1	First barrier falls to NF Br.	1.16	17.2	17.1																						
8/28/2024	NF Skykomish	1	First barrier falls to NF Br.	1.17	17.1	17.0	1								12		1			25								
8/28/2024	NF Skykomish	1	First barrier falls to NF Br.	1.18	17.0	16.9					P	3								1					1			
8/28/2024	NF Skykomish	1	First barrier falls to NF Br.	1.19	16.9	16.8					P	1		1						1								
8/28/2024	NF Skykomish	1	First barrier falls to NF Br.	1.20	16.8	16.7	6	1			P	1								1								
8/28/2024	NF Skykomish	1	First barrier falls to NF Br.	1.21	16.7	16.6	9			P	P	1			4					16								
8/28/2024	NF Skykomish	1	First barrier falls to NF Br.	1.22	16.6	16.5	2		1	P	P	1								4							Bull Trout with lure	
8/28/2024	NF Skykomish	1	First barrier falls to NF Br.	1.23	16.5	16.4						1															AJ,BJ, CV started surveying	
8/28/2024	NF Skykomish	1	First barrier falls to NF Br.	1.24	16.4	16.3						1															Chinook was clipped	
8/28/2024	NF Skykomish	1	First barrier falls to NF Br.	1.25	16.3	16.2						1																
8/28/2024	NF Skykomish	1	First barrier falls to NF Br.	1.26	16.2	16.1	2													3							1 Steelhead with lure	
8/28/2024	NF Skykomish	2	NF Br to San Jaun Camp	2.00	16.1	16.0						1																
8/28/2024	NF Skykomish	2	NF Br to San Jaun Camp	2.01	16.0	15.9	2			P		1																
8/28/2024	NF Skykomish	2	NF Br to San Jaun Camp	2.02	15.9	15.8					P	1								5								
8/28/2024	NF Skykomish	2	NF Br to San Jaun Camp	2.03	15.8	15.7	2			P	P									1					1			
8/28/2024	NF Skykomish	2	NF Br to San Jaun Camp	2.04	15.7	15.6				P																		
8/28/2024	NF Skykomish	2	NF Br to San Jaun Camp	2.05	15.6	15.5						1																
8/28/2024	NF Skykomish	2	NF Br to San Jaun Camp	2.06	15.5	15.4	2							1														
8/28/2024	NF Skykomish	2	NF Br to San Jaun Camp	2.07	15.4	15.3				P		2								6				1	1			
8/28/2024	NF Skykomish	2	NF Br to San Jaun Camp	2.08	15.3	15.2		1		P		2								4							1 adult UNK salmonid	
8/28/2024	NF Skykomish	2	NF Br to San Jaun Camp	2.09	15.2	15.1						1																
8/28/2024	NF Skykomish	2	NF Br to San Jaun Camp	2.10	15.1	15.0						1																
8/28/2024	NF Skykomish	2	NF Br to San Jaun Camp	2.11	15.0	14.9						1																
8/28/2024	NF Skykomish	2	NF Br to San Jaun Camp	2.12	14.9	14.8				P														1				
8/28/2024	NF Skykomish	2	NF Br to San Jaun Camp	2.13	14.8	14.7						1																
8/28/2024	NF Skykomish	2	NF Br to San Jaun Camp	2.14	14.7	14.6						4																
8/28/2024	NF Skykomish	2	NF Br to San Jaun Camp	2.15	14.6	14.5					P																	
8/28/2024	NF Skykomish	2	NF Br to San Jaun Camp	2.16	14.5	14.4		1		P	P																	
8/28/2024	NF Skykomish	2	NF Br to San Jaun Camp	2.17	14.4	14.3				P	P																	
8/28/2024	NF Skykomish	2	NF Br to San Jaun Camp	2.18	14.3	14.2	2		1																			
8/28/2024	NF Skykomish	2	NF Br to San Jaun Camp	2.19	14.2	14.1					P	1													1			
8/28/2024	NF Skykomish	2	NF Br to San Jaun Camp	2.20	14.1	14.0		1			P																	
8/28/2024	NF Skykomish	2	NF Br to San Jaun Camp	2.21	14.0	13.9					P																	
8/28/2024	NF Skykomish	2	NF Br to San Jaun Camp	2.22	13.9	13.8					P	1																

Appendix 3- continued, North Fork Skykomish, August 28 and 29 2024, Page 2

2024 Summer Steelhead Snorkel Surveys							Steelhead counts			o.mykiss	Other species adult counts											Juvenile salmon counts					
Date	River	Reach	Reach Description	Reach n	RM	uppe RM	lower	UM	M	UNK	YOY	1+	Adult	Chinook	Coho	Pink	Sockeye	Chum	Bull Trout	Cutthroat	Whitefish	Sucker	fis	Chinook	Coho	Bull	Notes
8/28/2024	NF Skykomish	3	San Juan Camp to Swimrr	3.00	13.8	13.7		5			P	P	1			1									1		
8/28/2024	NF Skykomish	3	San Juan Camp to Swimrr	3.01	13.7	13.6		2			P	P													1		
8/28/2024	NF Skykomish	3	San Juan Camp to Swimrr	3.02	13.6	13.5		22	4		P	P	3		4					4					1		All fish in pool on corner
8/28/2024	NF Skykomish	3	San Juan Camp to Swimrr	3.03	13.5	13.4					P	P												1	1		
8/28/2024	NF Skykomish	3	San Juan Camp to Swimrr	3.04	13.4	13.3		13	4		P	P		1	11		1								1		
8/28/2024	NF Skykomish	3	San Juan Camp to Swimrr	3.05	13.3	13.2		3	1		P	P	5		7												
8/28/2024	NF Skykomish	3	San Juan Camp to Swimrr	3.06	13.2	13.1					P	P								1							Cutt is a westslope
8/28/2024	NF Skykomish	3	San Juan Camp to Swimrr	3.07	13.1	13.0					P	P															
8/28/2024	NF Skykomish	3	San Juan Camp to Swimrr	3.08	13.0	12.9		4	1		P	P	3	4	80		7		1			5		1	1		SO, CH all below bear crk
8/28/2024	NF Skykomish	3	San Juan Camp to Swimrr	3.09	12.9	12.8					P	P										2					
8/28/2024	NF Skykomish	3	San Juan Camp to Swimrr	3.10	12.8	12.7					P	P															
8/28/2024	NF Skykomish	3	San Juan Camp to Swimrr	3.11	12.7	12.6					P	P	7		12											1	
8/28/2024	NF Skykomish	3	San Juan Camp to Swimrr	3.12	12.6	12.5					P	P										1					
8/28/2024	NF Skykomish	3	San Juan Camp to Swimrr	3.13	12.5	12.4					P	P	3		1							1				1	
8/28/2024	NF Skykomish	3	San Juan Camp to Swimrr	3.14	12.4	12.3				1	P	P	8		41										1		
8/29/2024	NF Skykomish	4	Swim Hole to Index Galen.	4.00	12.3	12.2		2			P	P	12		3							1		1			For whole reach: All coho
8/29/2024	NF Skykomish	4	Swim Hole to Index Galen.	4.01	12.2	12.1					P	P	3									1		1			
8/29/2024	NF Skykomish	4	Swim Hole to Index Galen.	4.02	12.1	12.0		1			P	P	7		2												
8/29/2024	NF Skykomish	4	Swim Hole to Index Galen.	4.03	12.0	11.9					P	P	10		1												
8/29/2024	NF Skykomish	4	Swim Hole to Index Galen.	4.04	11.9	11.8					P	P	11		3												
8/29/2024	NF Skykomish	4	Swim Hole to Index Galen.	4.05	11.8	11.7		1			P	P	5		3												
8/29/2024	NF Skykomish	4	Swim Hole to Index Galen.	4.06	11.7	11.6					P	P															
8/29/2024	NF Skykomish	4	Swim Hole to Index Galen.	4.07	11.6	11.5		1			P	P	4	1	1												
8/29/2024	NF Skykomish	4	Swim Hole to Index Galen.	4.08	11.5	11.4		1			P	P	5		1												
8/29/2024	NF Skykomish	4	Swim Hole to Index Galen.	4.09	11.4	11.3					P	P	2		1					1					5		
8/29/2024	NF Skykomish	4	Swim Hole to Index Galen.	4.10	11.3	11.2					P	P	5		2												
8/29/2024	NF Skykomish	4	Swim Hole to Index Galen.	4.11	11.2	11.1				1		P	2		1												
8/29/2024	NF Skykomish	4	Swim Hole to Index Galen.	4.12	11.1	11.0		1			P	P	4														
8/29/2024	NF Skykomish	4	Swim Hole to Index Galen.	4.13	11.0	10.9					P	P	3		1												
8/29/2024	NF Skykomish	5	Index-galena bridge to cat	5.00	10.9	10.8					P	P	4		25										30		
8/29/2024	NF Skykomish	5	Index-galena bridge to cat	5.01	10.8	10.7					P	P	7	2	9												
8/29/2024	NF Skykomish	5	Index-galena bridge to cat	5.02	10.7	10.6					P	P	5		3												
8/29/2024	NF Skykomish	5	Index-galena bridge to cat	5.03	10.6	10.5					P	P	1		3												
8/29/2024	NF Skykomish	5	Index-galena bridge to cat	5.04	10.5	10.4					P	P	3														
8/29/2024	NF Skykomish	5	Index-galena bridge to cat	5.05	10.4	10.3					P	P	3		2												
8/29/2024	NF Skykomish	5	Index-galena bridge to cat	5.06	10.3	10.2					P	P	4														
8/29/2024	NF Skykomish	5	Index-galena bridge to cat	5.07	10.2	10.1					P	P															
8/29/2024	NF Skykomish	5	Index-galena bridge to cat	5.08	10.1	10.0					P	P	2														
8/29/2024	NF Skykomish	5	Index-galena bridge to cat	5.09	10.0	9.9					P	P	3														
8/29/2024	NF Skykomish	5	Index-galena bridge to cat	5.10	9.9	9.8		1			P	P	7														
8/29/2024	NF Skykomish	5	Index-galena bridge to cat	5.11	9.8	9.7		2	2		P	P	15	17	153		5		4								All fish in hole under brid
8/29/2024	NF Skykomish	5	Index-galena bridge to cat	5.12	9.7	9.6					P	P	3														
8/29/2024	NF Skykomish	5	Index-galena bridge to cat	5.13	9.6	9.5					P	P	8							1							
8/29/2024	NF Skykomish	5	Index-galena bridge to cat	5.14	9.5	9.4					P	P	5														
8/29/2024	NF Skykomish	5	Index-galena bridge to cat	5.15	9.4	9.3					P	P	6		5					3							
8/29/2024	NF Skykomish	5	Index-galena bridge to cat	5.16	9.3	9.2		1			P	P	2		6												
8/29/2024	NF Skykomish	5	Index-galena bridge to cat	5.17	9.2	9.1					P	P															
8/29/2024	NF Skykomish	5	Index-galena bridge to cat	5.18	9.1	9.0					P	P															
8/29/2024	NF Skykomish	5	Index-galena bridge to cat	5.19	9.0	8.9					P	P	1														
8/29/2024	NF Skykomish	5	Index-galena bridge to cat	5.20	8.9	8.8					P	P	3														
8/29/2024	NF Skykomish	5	Index-galena bridge to cat	5.21	8.8	8.7					P	P	2														
8/29/2024	NF Skykomish	5	Index-galena bridge to cat	5.22	8.7	8.6					P	P	1														
8/29/2024	NF Skykomish	5	Index-galena bridge to cat	5.23	8.6	8.5					P	P	5							1							
8/29/2024	NF Skykomish	5	Index-galena bridge to cat	5.24	8.5	8.4					P	P															
8/29/2024	NF Skykomish	5	Index-galena bridge to cat	5.25	8.4	8.3					P	P	1														

Appendix 3- continued, North Fork Skykomish, August 28 and 29 2024, Page 2

[illegible]

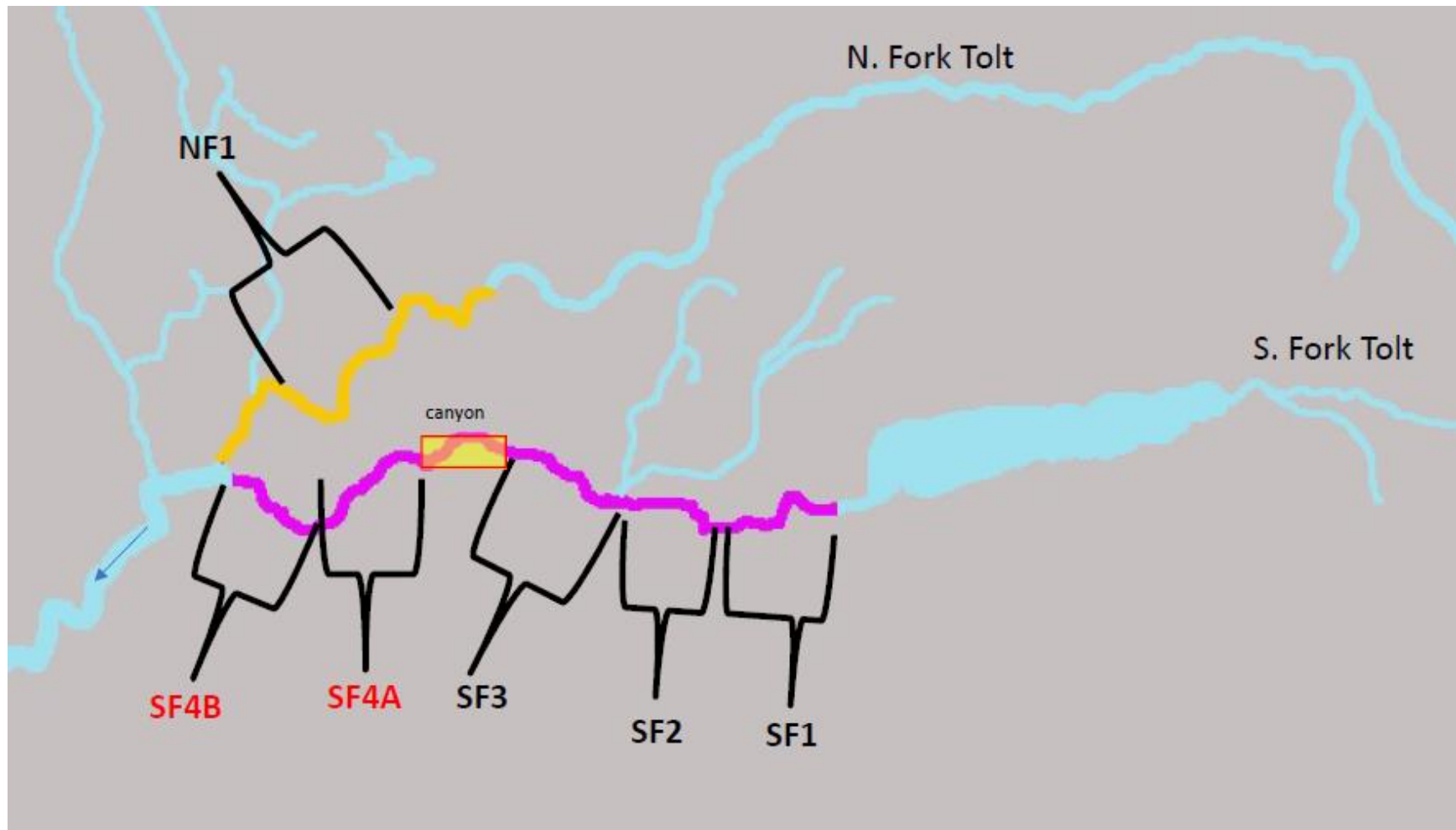
Appendix 4- North Fork Skykomish Snorkel Observation Data, October 2, 2024

2024 Summer Steelhead Snorkel Surveys										Steelhead counts			o.mykiss			Other species adult counts										Juvenile salmon counts					
Date	River	Reacl	Reach	Description	Reach no	RM	upper	RM	lower	UM	M	UNK	YOY	1+	Adult	Chinook	Coho	Pink	Sockeye	Chum	Bull	Trout	Cutthroat	Whitefish	Sucker	fis	Chinook	Coho	Bull	Notes	
10/2/2024	NF Skykomish	1	First barrier falls to		1.00	18.8	18.7								1																
10/2/2024	NF Skykomish	1	First barrier falls to		1.01	18.7	18.6																								
10/2/2024	NF Skykomish	1	First barrier falls to		1.02	18.6	18.5								1				1												
10/2/2024	NF Skykomish	1	First barrier falls to		1.03	18.5	18.4			1				1	1				1										1		
10/2/2024	NF Skykomish	1	First barrier falls to		1.04	18.4	18.3																								
10/2/2024	NF Skykomish	1	First barrier falls to		1.05	18.3	18.2							1	1	1														1	
10/2/2024	NF Skykomish	1	First barrier falls to		1.06	18.2	18.1							1	1														1		
10/2/2024	NF Skykomish	1	First barrier falls to		1.07	18.1	18.0									1													1		
10/2/2024	NF Skykomish	1	First barrier falls to		1.08	18.0	17.9									1															
10/2/2024	NF Skykomish	1	First barrier falls to		1.09	17.9	17.8											1													
10/2/2024	NF Skykomish	1	First barrier falls to		1.10	17.8	17.7									2							1								
10/2/2024	NF Skykomish	1	First barrier falls to		1.11	17.7	17.6																								
10/2/2024	NF Skykomish	1	First barrier falls to		1.12	17.6	17.5									1															
10/2/2024	NF Skykomish	1	First barrier falls to		1.13	17.5	17.4									1															Coho Jack predation
10/2/2024	NF Skykomish	1	First barrier falls to		1.14	17.4	17.3								1	1															
10/2/2024	NF Skykomish	1	First barrier falls to		1.15	17.3	17.2								1	2															Mostly walked
10/2/2024	NF Skykomish	1	First barrier falls to		1.16	17.2	17.1																2								
10/2/2024	NF Skykomish	1	First barrier falls to		1.17	17.1	17.0			11									30												
10/2/2024	NF Skykomish	1	First barrier falls to		1.18	17.0	16.9			3						4							25								
10/2/2024	NF Skykomish	1	First barrier falls to		1.19	16.9	16.8			2									1				5								
10/2/2024	NF Skykomish	1	First barrier falls to		1.20	16.8	16.7			16		3							35				1								
10/2/2024	NF Skykomish	1	First barrier falls to		1.21	16.7	16.6																20							1	
10/2/2024	NF Skykomish	1	First barrier falls to		1.22	16.6	16.5			1		1		1									3							1	
10/2/2024	NF Skykomish	1	First barrier falls to		1.23	16.5	16.4								1	5														1	
10/2/2024	NF Skykomish	1	First barrier falls to		1.24	16.4	16.3									4		1	3				3							1	Hatchery Chinook
10/2/2024	NF Skykomish	1	First barrier falls to		1.25	16.3	16.2							1	1								1							1	
10/2/2024	NF Skykomish	1	First barrier falls to		1.26	16.2	16.1			4				1	1	6			3				6							1	
10/2/2024	NF Skykomish	2	NF Br to San Jaun		2.00	16.1	16.0			3		1			1												1	1			
10/2/2024	NF Skykomish	2	NF Br to San Jaun		2.01	16.0	15.9								1																
10/2/2024	NF Skykomish	2	NF Br to San Jaun		2.02	15.9	15.8			3					1	1							30		1		1	1			
10/2/2024	NF Skykomish	2	NF Br to San Jaun		2.03	15.8	15.7									1															
10/2/2024	NF Skykomish	2	NF Br to San Jaun		2.04	15.7	15.6							1	1	4												1	1	1	
10/2/2024	NF Skykomish	2	NF Br to San Jaun		2.05	15.6	15.5								1				30												
10/2/2024	NF Skykomish	2	NF Br to San Jaun		2.06	15.5	15.4			4						1		2	35				3							1	
10/2/2024	NF Skykomish	2	NF Br to San Jaun		2.07	15.4	15.3			6		1			1	5		1	4				6			1	1				
10/2/2024	NF Skykomish	2	NF Br to San Jaun		2.08	15.3	15.2									2						2	4						1	1	
10/2/2024	NF Skykomish	2	NF Br to San Jaun		2.09	15.2	15.1			4		1				1			15				3						1		
10/2/2024	NF Skykomish	2	NF Br to San Jaun		2.10	15.1	15.0			1													2						1		
10/2/2024	NF Skykomish	2	NF Br to San Jaun		2.11	15.0	14.9									1															
10/2/2024	NF Skykomish	2	NF Br to San Jaun		2.12	14.9	14.8																								Shallow water
10/2/2024	NF Skykomish	2	NF Br to San Jaun		2.13	14.8	14.7																								Shallow water
10/2/2024	NF Skykomish	2	NF Br to San Jaun		2.14	14.7	14.6			5					1	6			30										1		
10/2/2024	NF Skykomish	2	NF Br to San Jaun		2.15	14.6	14.5								1				1												
10/2/2024	NF Skykomish	2	NF Br to San Jaun		2.16	14.5	14.4			2						1	4														
10/2/2024	NF Skykomish	2	NF Br to San Jaun		2.17	14.4	14.3			1						1	1														
10/2/2024	NF Skykomish	2	NF Br to San Jaun		2.18	14.3	14.2			16		1				1	3						26								
10/2/2024	NF Skykomish	2	NF Br to San Jaun		2.19	14.2	14.1									1	4														
10/2/2024	NF Skykomish	2	NF Br to San Jaun		2.20	14.1	14.0									1	2														
10/2/2024	NF Skykomish	2	NF Br to San Jaun		2.21	14.0	13.9									1	1														
10/2/2024	NF Skykomish	2	NF Br to San Jaun		2.22	13.9	13.8									1	1														

Appendix 4- continued, North Fork Skykomish, October 2, 2024, page 2

2024 Summer Steelhead Snorkel Surveys						Steelhead counts			o.mykiss			Other species adult counts										Juvenile salmon counts			Notes
Date	River	Reacl	Reach Description	Reach no	RM upper	RM lower	UM	M	UNK	YOY	1+	Adult	Chinook	Coho	Pink	Sockeye	Chum	BullTrout	Cutthroat	Whitefish	Suckerfis	Chinook	Coho	Bull	
10/2/2024	NF Skykomish	3	San Juan Camp to	3.00	13.8	13.7	6	1				4	1	2											Chinook was a jack
10/2/2024	NF Skykomish	3	San Juan Camp to	3.01	13.7	13.6					1	1													
10/2/2024	NF Skykomish	3	San Juan Camp to	3.02	13.6	13.5	9	4		1		2		35									1		
10/2/2024	NF Skykomish	3	San Juan Camp to	3.03	13.5	13.4						3													
10/2/2024	NF Skykomish	3	San Juan Camp to	3.04	13.4	13.3	4	1				3		65									1		
10/2/2024	NF Skykomish	3	San Juan Camp to	3.05	13.3	13.2	2	1			1	2		65									1		
10/2/2024	NF Skykomish	3	San Juan Camp to	3.06	13.2	13.1							1												
10/2/2024	NF Skykomish	3	San Juan Camp to	3.07	13.1	13.0		1																	
10/2/2024	NF Skykomish	3	San Juan Camp to	3.08	13.0	12.9	1	1		1	1	5		1550			1				25		1		Coho in 2 groups, 1 in middle g
10/2/2024	NF Skykomish	3	San Juan Camp to	3.09	12.9	12.8				1	1	7											1		
10/2/2024	NF Skykomish	3	San Juan Camp to	3.10	12.8	12.7								1							10		1		
10/2/2024	NF Skykomish	3	San Juan Camp to	3.11	12.7	12.6				1	1	15	2	21									1		
10/2/2024	NF Skykomish	3	San Juan Camp to	3.12	12.6	12.5				1	1	8		2							8		1		
10/2/2024	NF Skykomish	3	San Juan Camp to	3.13	12.5	12.4				1	1	16	2	3							5		1		1 UM, 1 marked chinook
10/2/2024	NF Skykomish	3	San Juan Camp to	3.14	12.4	12.3	1	1		1	1	22		45							3		1		

Appendix 5: Tolt River Forks Survey Sections Schematic



South Fork Tolt

Date	Year	Period	River	Data_Col	Data_Col	Data_River_Mile	Steelhead_W.	Steelhead_H.	Steelhead_U.	1/2_Salt_14-20	RBT/Res	Parr_3"+	oY_<3	Res_Cut	Sea_Run_Cut	Whitfish	Char	Chinook	Coho	Dockey	Pink	Rainbow	Brook	Jack_Chin	Dolly_V	Carrass	Unknown_salm	Redfucker	Culpeper	Notes								
9/26/2024	2024	Fall	SF1	Liz Ablow	Denise Krownb	7.7	2				25	65	15																		LB many bubble curatins and downed trees							
9/26/2024	2024	Fall	SF1	Liz Ablow	Denise Krownb	7.6					5	10	5																		RB walked a lot							
9/26/2024	2024	Fall	SF1	Liz Ablow	Denise Krownb	7.5					5	10	5																		stick bank center when hit island							
9/26/2024	2024	Fall	SF1	Liz Ablow	Denise Krownb	7.4	1			1	10	60	5																									
9/26/2024	2024	Fall	SF1	Liz Ablow	Denise Krownb	7.3	3		1	1	20	50	10																									
9/26/2024	2024	Fall	SF1	Liz Ablow	Denise Krownb	7.2	1				16	40																										
9/26/2024	2024	Fall	SF1	Liz Ablow	Denise Krownb	7.1					35	40																										
9/26/2024	2024	Fall	SF1	Liz Ablow	Denise Krownb	7					30	40																										
9/26/2024	2024	Fall	SF1	Liz Ablow	Denise Krownb	6.9																																
9/26/2024	2024	Fall	SF2	Aaron J.	Joe V.	6.8	14	1			2	100	10																									
9/26/2024	2024	Fall	SF2	Aaron J.	Joe V.	6.7					2	100	10																									
9/26/2024	2024	Fall	SF2	Aaron J.	Joe V.	6.6					2	60																										
9/26/2024	2024	Fall	SF2	Aaron J.	Joe V.	6.5	2	1			2	80	5																									
9/26/2024	2024	Fall	SF2	Aaron J.	Joe V.	6.4	2				1	70	5																									
9/26/2024	2024	Fall	SF2	Aaron J.	Joe V.	6.3	2				1	60																										
9/26/2024	2024	Fall	SF2	Aaron J.	Joe V.	6.2	1				1	60																										
9/26/2024	2024	Fall	SF2	Aaron J.	Joe V.	6.1	3		1			50																										
9/26/2024	2024	Fall	SF2	Aaron J.	Joe V.	6						40																										
9/26/2024	2024	Fall	SF2	Aaron J.	Joe V.	5.9			1		1	50																										
9/26/2024	2024	Fall	SF2	Aaron J.	Joe V.	5.8	2		1		1	60																										
9/26/2024	2024	Fall	SF2	Aaron J.	Joe V.	5.7	1					70																										
9/26/2024	2024	Fall	SF2	Aaron J.	Joe V.	5.6					1	50	5																									
9/26/2024	2024	Fall	SF2	Aaron J.	Joe V.	5.5	1					50																										
9/26/2024	2024	Fall	SF2	Aaron J.	Joe V.	5.4	2		1	1		60																										
9/26/2024	2024	Fall	SF2	Aaron J.	Joe V.	5.3						50																										
9/26/2024	2024	Fall	SF2	Aaron J.	Joe V.	5.2						30																										
9/26/2024	2024	Fall	SF2	Aaron J.	Joe V.	5.1	3			1	2	70																										
9/26/2024	2024	Fall	SF3	Jamie G.	Zach M.	5					3	180	15																									
9/26/2024	2024	Fall	SF3	Jamie G.	Zach M.	4.9	2				8	90	20																									
9/26/2024	2024	Fall	SF3	Jamie G.	Zach M.	4.8	8		1		8	110	60																									
9/26/2024	2024	Fall	SF3	Jamie G.	Zach M.	4.7					1	25	60																									
9/26/2024	2024	Fall	SF3	Jamie G.	Zach M.	4.6	2				1	80	25																									
9/26/2024	2024	Fall	SF3	Jamie G.	Zach M.	4.5	2				3	130	15																									
9/26/2024	2024	Fall	SF3	Jamie G.	Zach M.	4.4	1				3	125	15																									
9/26/2024	2024	Fall	SF3	Jamie G.	Zach M.	4.3	1				1	45	8																									
9/26/2024	2024	Fall	SF3	Jamie G.	Zach M.	4.2	1				2	65	60																									
9/26/2024	2024	Fall	SF3	Jamie G.	Zach M.	4.1	2			1	3	100	20																									
9/26/2024	2024	Fall	SF3	Jamie G.	Zach M.	4					1	110	20																									
9/26/2024	2024	Fall	SF3	Jamie G.	Zach M.	3.9	1				5	75	35																									
9/26/2024	2024	Fall	SF3	Jamie G.	Zach M.	3.8					1	40	12																									
9/26/2024	2024	Fall	SF3	Jamie G.	Zach M.	3.7					3	50	12																									
9/26/2024	2024	Fall	SF3	Jamie G.	Zach M.	3.6						10	2																									
9/26/2024	2024	Fall	SF3	Jamie G.	Zach M.	3.5					2	50	20																									
9/26/2024	2024	Fall	SF4a	Kiyomi	Jake	2.4						15	15				2														2 chinook were clip unknown. Also saw 3 fish >14", unknown species.							
9/26/2024	2024	Fall	SF4a	Kiyomi	Jake	2.3						15	30																									
9/26/2024	2024	Fall	SF4a	Kiyomi	Jake	2.2						30	50				10																					
9/26/2024	2024	Fall	SF4a	Kiyomi	Jake	2.1				1		55	50																									
9/26/2024	2024	Fall	SF4a	Kiyomi	Jake	2			1		2	20	100				5																					
9/26/2024	2024	Fall	SF4a	Kiyomi	Jake	1.9		1		1	4	45	100				5														Hatchery steelhead was male							
9/26/2024	2024	Fall	SF4a	Kiyomi	Jake	1.8				2	7	60	125				4																					
9/26/2024	2024	Fall	SF4a	Kiyomi	Jake	1.7					2	30	50				3																					
9/26/2024	2024	Fall	SF4a	Kiyomi	Jake	1.6			1		10	60	50				3		3												three clipped chinook							
9/26/2024	2024	Fall	SF4a	Kiyomi	Jake	1.5					1	15	25				2		1											one clipped chinook								
9/26/2024	2024	Fall	SF4a	Kiyomi	Jake	1.4					3	20	40				1																					

North Fork Tolt

[illegible]